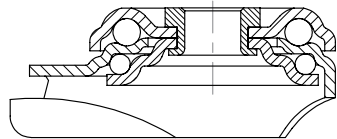


Series: LRXA-TPA, BRXA-TPA, LKRXA-TPA, BKRXA-TPA

Stainless steel light duty castors with bolt hole fitting, wheel with thermoplastic rubber tread

50 - 120 kg

RoHS



Brackets: LRXA/BRXA, LKRXA/BKRXA series - Made of pressed high-quality, chromium-nickel stainless steel (Material No. 1.4301/AISI 304), swivel bracket with double ball bearing in the swivel head, strong central kingpin, ball protection by the special top plate and ball disc design. The special Blickle dynamic riveting process of the swivel head results in minimal swivel head play and smooth rolling characteristics with an increased service life achieved by the work hardening of the ball race grooves. All parts incl. axle material are corrosion-resistant.

Wheels: TPA series - Tread: Made of high-quality thermoplastic rubber-elastomer (TPE), containing traces of oil, 85° shore A, grey, non-marking. Wheel centre: Made of high-quality, impact-resistant polypropylene, silver grey (black for electrically conductive '-ELS' version).

Bearing types: Plain bore or a centrally encapsulated, sealed ball bearing (C). Ball bearing (C) with synthetic thread guard and additional ball bearing seals as standard.

Detailed description: Page 88 and 42

Bolted wheel axle. Vibration-ground finished.

Bracket overview: Page 69

Wheel and swivel head 'stop-fix' brake: Page 80



Swivel castors	Fixed castors	Swivel castors with 'stop-fix' brake	Wheel Ø [mm]	Wheel width [mm]	Load capacity [kg]	Bearing type	Total height [mm]	Plate Ø [mm]	Bolt hole Ø [mm]	Offset swivel castor [mm]
LRXA-TPA 50G	BRXA-TPA 50G	LRXA-TPA 50G-FI	50	19	50	Plain bore	69	43	11	25
LRXA-TPA 50KD-FK	BRXA-TPA 50KD-FK	LRXA-TPA 50KD-FI-FK	50	19	50	Ball bearing (C)	69	43	11	25
LRXA-TPA 75G	BRXA-TPA 75G	LRXA-TPA 75G-FI	75	25	75	Plain bore	98	43	11	29
LRXA-TPA 75KD-FK	BRXA-TPA 75KD-FK	LRXA-TPA 75KD-FI-FK	75	25	75	Ball bearing (C)	98	43	11	29
LKRXA-TPA 80G	BKRXA-TPA 80G	LKRXA-TPA 80G-FI	80	32	100	Plain bore	108	57	13	40
LKRXA-TPA 80G-11		LKRXA-TPA 80G-11-FI	80	32	100	Plain bore	108	57	11	40
LKRXA-TPA 80KD-FK	BKRXA-TPA 80KD-FK	LKRXA-TPA 80KD-FI-FK	80	32	100	Ball bearing (C)	108	57	13	40
LKRXA-TPA 80KD-11-FK		LKRXA-TPA 80KD-11-FI-FK	80	32	100	Ball bearing (C)	108	57	11	40
LKRXA-TPA 101G	BKRXA-TPA 101G	LKRXA-TPA 101G-FI	100	32	110	Plain bore	133	57	13	40
LKRXA-TPA 101G-11		LKRXA-TPA 101G-11-FI	100	32	110	Plain bore	133	57	11	40
LKRXA-TPA 101KD-FK	BKRXA-TPA 101KD-FK	LKRXA-TPA 101KD-FI-FK	100	32	110	Ball bearing (C)	133	57	13	40
LKRXA-TPA 101KD-11-FK		LKRXA-TPA 101KD-11-FI-FK	100	32	110	Ball bearing (C)	133	57	11	40
LKRXA-TPA 126G	BKRXA-TPA 126G	LKRXA-TPA 126G-FI	125	32	120	Plain bore	158	57	13	40
LKRXA-TPA 126G-11		LKRXA-TPA 126G-11-FI	125	32	120	Plain bore	158	57	11	40
LKRXA-TPA 126KD-FK	BKRXA-TPA 126KD-FK	LKRXA-TPA 126KD-FI-FK	125	32	120	Ball bearing (C)	158	57	13	40
LKRXA-TPA 126KD-11-FK		LKRXA-TPA 126KD-11-FI-FK	125	32	120	Ball bearing (C)	158	57	11	40

18

Options



	Image plain bore version	Electrically conductive version, non-marking grey *	With synthetic expander fitting, corrosion-resistant	With stainless steel plug-in stem **	Bumpers
Technical description page		36, 38	75	74	84
Product code suffix		-ELS	refer to page 352	refer to page 352	AG / ARG series
Available for		all sizes	swivel castors bolt hole Ø11 (except ELS)	swivel castors with wheel Ø 125 mm	refer to page 352

* Load capacity is reduced by 35 %

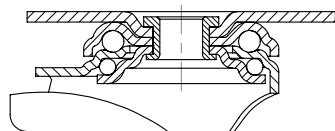
** In acc. to DIN 18867-8 (large-scale catering equipment)

Series: LPXA-TPA, BPXA-TPA, LKPXA-TPA, BKPXA-TPA

Stainless steel light duty castors with top plate fitting, wheel with thermoplastic rubber tread

50 - 120 kg

RoHS



Brackets: LPXA/BPXA, LKPXA/BKPXA series - Made of pressed high-quality, chromium-nickel stainless steel (Material No. 1.4301/AISI 304), swivel bracket with double ball bearing in the swivel head, strong central kingpin, ball protection by the special top plate and ball disc design. The special Blickle dynamic riveting process of the swivel head results in minimal swivel head play and smooth rolling characteristics with an increased service life achieved by the work hardening of the ball race grooves. All parts incl. axle material are corrosion-resistant. Bolted wheel axle. Vibration-ground finished.

Bracket overview: Page 70

Top plate drawings: Page 76

Wheel and swivel head 'stop-fix' brake: Page 80

Wheels: TPA series - Tread: Made of high-quality thermoplastic rubber-elastomer (TPE), containing traces of oil, 85° shore A, grey, non-marking.

Wheel centre: Made of high-quality, impact-resistant polypropylene, silver grey (black for electrically conductive '-ELS' version).

Bearing types: Plain bore or a centrally encapsulated, sealed ball bearing (C). Ball bearing (C) with synthetic thread guard and additional ball bearing seals as standard.

Detailed description: Page 88 and 42

Swivel castors	Fixed castors	Swivel castors with 'stop-fix' brake	Wheel Ø [mm]	Wheel width [mm]	Load capacity [kg]	Bearing type	Total height [mm]	Plate size [mm]	Bolt hole spacing [mm]	Bolt hole Ø [mm]	Offset swivel castor [mm]
LPXA-TPA 50G	BPXA-TPA 50G	LPXA-TPA 50G-FI	50	19	50	Plain bore	71	60 x 60	38x38/48x48	6.2	25
LPXA-TPA 50KD-FK	BPXA-TPA 50KD-FK	LPXA-TPA 50KD-FI-FK	50	19	50	Ball bearing (C)	71	60 x 60	38x38/48x48	6.2	25
LPXA-TPA 75G	BPXA-TPA 75G	LPXA-TPA 75G-FI	75	25	75	Plain bore	100	60 x 60	38x38/48x48	6.2	29
LPXA-TPA 75KD-FK	BPXA-TPA 75KD-FK	LPXA-TPA 75KD-FI-FK	75	25	75	Ball bearing (C)	100	60 x 60	38x38/48x48	6.2	29
LKPXA-TPA 80G	BKPXA-TPA 80G	LKPXA-TPA 80G-FI	80	32	100	Plain bore	111	90 x 66	75x45/61x51	8.5	40
LKPXA-TPA 80KD-FK	BKPXA-TPA 80KD-FK	LKPXA-TPA 80KD-FI-FK	80	32	100	Ball bearing (C)	111	90 x 66	75x45/61x51	8.5	40
LKPXA-TPA 101G	BKPXA-TPA 101G	LKPXA-TPA 101G-FI	100	32	110	Plain bore	136	90 x 66	75x45/61x51	8.5	40
LKPXA-TPA 101KD-FK	BKPXA-TPA 101KD-FK	LKPXA-TPA 101KD-FI-FK	100	32	110	Ball bearing (C)	136	90 x 66	75x45/61x51	8.5	40
LKPXA-TPA 126G	BKPXA-TPA 126G	LKPXA-TPA 126G-FI	125	32	120	Plain bore	161	90 x 66	75x45/61x51	8.5	40
LKPXA-TPA 126G-26	BKPXA-TPA 126G-26	LKPXA-TPA 126G-26-FI	125	32	120	Plain bore	161	90 x 66	75 x 50 *	8.5	40
LKPXA-TPA 126KD-FK	BKPXA-TPA 126KD-FK	LKPXA-TPA 126KD-FI-FK	125	32	120	Ball bearing (C)	161	90 x 66	75x45/61x51	8.5	40
LKPXA-TPA 126KD-26-FK	BKPXA-TPA 126KD-26-FK	LKPXA-TPA 126KD-26-FI-FK	125	32	120	Ball bearing (C)	161	90 x 66	75 x 50 *	8.5	40

* In acc. to DIN 18867-8 (large-scale catering equipment)

Options



	Image plain bore version	Electrically conductive version, non-marking grey **
Technical description page		36, 38
Product code suffix		-ELS
Available for		all sizes

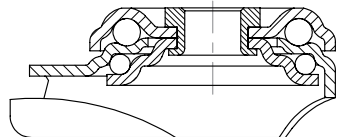
** Load capacity is reduced by 35 %

Series: LRXA-PO, BRXA-PO, LKRXA-PO, BKRXA-PO

Stainless steel light duty castors with bolt hole fitting, with nylon wheel

75 - 120 kg

RoHS



Brackets: LRXA/BRXA, LKRXA/BKRXA series - Made of pressed high-quality, chromium-nickel stainless steel (Material No. 1.4301/AISI 304), swivel bracket with double ball bearing in the swivel head, strong central kingpin, ball protection by the special top plate and ball disc design. The special Blickle dynamic riveting process of the swivel head results in minimal swivel head play and smooth rolling characteristics with an increased service life achieved by the work hardening of the ball race grooves. All parts incl. axle material are corrosion-resistant. Bolted wheel axle. Vibration-ground finished. Bracket overview: Page 69 Wheel and swivel head 'stop-fix' brake: Page 80

Wheels: PO series - Made of high-quality, impact-resistant nylon, 70° shore D, natural white. Bearing type: Plain bore. Detailed description: Page 276 and 49

Swivel castors	Fixed castors	Swivel castors with 'stop-fix' brake	Wheel Ø [mm]	Wheel width [mm]	Load capacity [kg]	Bearing type	Total height [mm]	Plate Ø [mm]	Bolt hole Ø [mm]	Offset swivel castor [mm]
LRXA-PO 50G	BRXA-PO 50G	LRXA-PO 50G-FI	50	18	75	Plain bore	69	43	11	25
LRXA-PO 76G	BRXA-PO 76G	LRXA-PO 76G-FI	75	23	75	Plain bore	98	43	11	29
LKRXA-PO 80G	BKRXA-PO 80G	LKRXA-PO 80G-FI	80	32	120	Plain bore	108	57	13	40
LKRXA-PO 80G-11		LKRXA-PO 80G-11-FI	80	32	120	Plain bore	108	57	11	40
LKRXA-PO 101G	BKRXA-PO 101G	LKRXA-PO 101G-FI	100	32	120	Plain bore	133	57	13	40
LKRXA-PO 101G-11		LKRXA-PO 101G-11-FI	100	32	120	Plain bore	133	57	11	40
LKRXA-PO 126G	BKRXA-PO 126G	LKRXA-PO 126G-FI	125	32	120	Plain bore	158	57	13	40
LKRXA-PO 126G-11		LKRXA-PO 126G-11-FI	125	32	120	Plain bore	158	57	11	40

18

Options



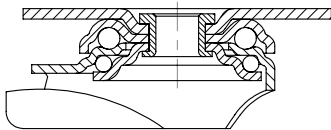
	With synthetic expander fitting, corrosion-resistant	Bumpers
Technical description page	75	84
Product code suffix	refer to page 352	AG / ARG series
Available for	swivel castors with bolt hole Ø 11 mm	refer to page 352

Series: LPXA-PO, BPXA-PO, LKPXA-PO, BKPXA-PO

Stainless steel light duty castors with top plate fitting, with nylon wheel

75 - 120 kg

RoHS



Brackets: LPXA/BPXA, LKPXA/BKPXA series - Made of pressed high-quality, chromium-nickel stainless steel (Material No. 1.4301/AISI 304), swivel bracket with double ball bearing in the swivel head, strong central kingpin, ball protection by the special top plate and ball disc design. The special Blickle dynamic riveting process of the swivel head results in minimal swivel head play and smooth rolling characteristics with an increased service life achieved by the work hardening of the ball race grooves. All parts incl. axle material are corrosion-resistant. Bolted wheel axle. Vibration-ground finished.
Bracket overview: Page 70
Top plate drawings: Page 76
Wheel and swivel head 'stop-fix' brake: Page 80

Wheels: PO series - Made of high-quality, impact-resistant nylon, 70° shore D, natural white. Bearing type: Plain bore. Detailed description: Page 276 and 49

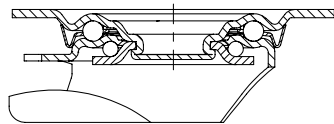
Swivel castors	Fixed castors	Swivel castors with 'stop-fix' brake	Wheel Ø [mm]	Wheel width [mm]	Load capacity [kg]	Bearing type	Total height [mm]	Plate size [mm]	Bolt hole spacing [mm]	Bolt hole Ø [mm]	Offset swivel castor [mm]
LPXA-PO 50G	BPXA-PO 50G	LPXA-PO 50G-FI	50	18	75	Plain bore	71	60 x 60	38x38/48x48	6.2	25
LPXA-PO 76G	BPXA-PO 76G	LPXA-PO 76G-FI	75	23	75	Plain bore	100	60 x 60	38x38/48x48	6.2	29
LKPXA-PO 80G	BKPXA-PO 80G	LKPXA-PO 80G-FI	80	32	120	Plain bore	111	90 x 66	75x45/61x51	8.5	40
LKPXA-PO 101G	BKPXA-PO 101G	LKPXA-PO 101G-FI	100	32	120	Plain bore	136	90 x 66	75x45/61x51	8.5	40
LKPXA-PO 126G	BKPXA-PO 126G	LKPXA-PO 126G-FI	125	32	120	Plain bore	161	90 x 66	75x45/61x51	8.5	40

Series: LEX-VPP, BX-VPP

Stainless steel castors with top plate fitting, wheel with standard solid rubber tyre

50 - 205 kg

RoHS



Brackets: LEX/BX series - Made of pressed high-quality, chromium-nickel stainless steel (Material No. 1.4301/ AISI 304), swivel bracket with double ball bearing in the swivel head, swivel head seals. The special Blickle dynamic riveting process of the swivel head results in minimal swivel head play and smooth rolling characteristics with an increased service life achieved by the work hardening of the ball race grooves.
All parts incl. axle material are corrosion-resistant.
Bolted wheel axle.
Vibration-ground finished.
Bracket overview: Page 70
Top plate drawings: Page 77
Wheel and swivel head 'stop-fix' brake: Page 80

Wheels: VPP series - Tyres: Made of standard solid rubber, 80° shore A, grey, non-marking.
Wheel dimension 80 x 32 mm: 90° shore A.
Rims: Made of high-quality, impact-resistant polypropylene, black.
Wheel dimension 80 x 32 mm: Made of high-quality, impact-resistant nylon, dark grey.
Bearing types: Plain bore or stainless steel roller bearing.
Detailed description: Page 139, 140 and 43

Swivel castors	Fixed castors	Swivel castors with 'stop-fix' brake	Wheel Ø [mm]	Tyre width [mm]	Load capacity [kg]	Bearing type	Total height [mm]	Plate size [mm]	Bolt hole spacing [mm]	Bolt hole Ø [mm]	Offset swivel castor [mm]
LEX-VPP 80G-SG	BX-VPP 80G-SG	LEX-VPP 80G-FI-SG	80	25	50	Plain bore	102	100 x 85	80 x 60	9	38
LEX-VPP 80XR-SG	BX-VPP 80XR-SG	LEX-VPP 80XR-FI-SG	80	25	50	Roller bearing	102	100 x 85	80 x 60	9	38
LEX-VPP 82G-SG	BX-VPP 82G-SG	LEX-VPP 82G-FI-SG	80	32	100	Plain bore	102	100 x 85	80 x 60	9	38
LEX-VPP 100G-SG	BX-VPP 100G-SG	LEX-VPP 100G-FI-SG	100	30	70	Plain bore	125	100 x 85	80 x 60	9	36
LEX-VPP 100XR-SG	BX-VPP 100XR-SG	LEX-VPP 100XR-FI-SG	100	30	70	Roller bearing	125	100 x 85	80 x 60	9	36
LEX-VPP 125G-SG	BX-VPP 125G-SG	LEX-VPP 125G-FI-SG	125	37.5	100	Plain bore	150	100 x 85	80 x 60	9	40
LEX-VPP 125XR-SG	BX-VPP 125XR-SG	LEX-VPP 125XR-FI-SG	125	37.5	100	Roller bearing	150	100 x 85	80 x 60	9	40
LEX-VPP 150G-1-SG	BX-VPP 150G-1-SG	LEX-VPP 150G-1-FI-SG	150	40	135	Plain bore	190	100 x 85	80 x 60	9	54
LEX-VPP 150G-SG	BX-VPP 150G-SG	LEX-VPP 150G-FI-SG	150	40	135	Plain bore	190	140 x 110	105 x 75-80	11	54
LEX-VPP 150XR-1-SG	BX-VPP 150XR-1-SG	LEX-VPP 150XR-1-FI-SG	150	40	135	Roller bearing	190	100 x 85	80 x 60	9	54
LEX-VPP 150XR-SG	BX-VPP 150XR-SG	LEX-VPP 150XR-FI-SG	150	40	135	Roller bearing	190	140 x 110	105 x 75-80	11	54
LEX-VPP 160G-1-SG	BX-VPP 160G-1-SG	LEX-VPP 160G-1-FI-SG	160	40	135	Plain bore	195	100 x 85	80 x 60	9	54
LEX-VPP 160G-SG	BX-VPP 160G-SG	LEX-VPP 160G-FI-SG	160	40	135	Plain bore	195	140 x 110	105 x 75-80	11	54
LEX-VPP 160XR-1-SG	BX-VPP 160XR-1-SG	LEX-VPP 160XR-1-FI-SG	160	40	135	Roller bearing	195	100 x 85	80 x 60	9	54
LEX-VPP 160XR-SG	BX-VPP 160XR-SG	LEX-VPP 160XR-FI-SG	160	40	135	Roller bearing	195	140 x 110	105 x 75-80	11	54
LEX-VPP 200G-1-SG	BX-VPP 200G-1-SG	LEX-VPP 200G-1-FI-SG	200	50	205	Plain bore	235	100 x 85	80 x 60	9	54
LEX-VPP 200G-SG	BX-VPP 200G-SG	LEX-VPP 200G-FI-SG	200	50	205	Plain bore	235	140 x 110	105 x 75-80	11	54
LEX-VPP 200XR-1-SG	BX-VPP 200XR-1-SG	LEX-VPP 200XR-1-FI-SG	200	50	205	Roller bearing	235	100 x 85	80 x 60	9	54
LEX-VPP 200XR-SG	BX-VPP 200XR-SG	LEX-VPP 200XR-FI-SG	200	50	205	Roller bearing	235	140 x 110	105 x 75-80	11	54



Options	With 'ideal-stop' brake *	Directional lock (retro-fit) 1 x 360°, stainless **	Directional lock (retro fit) 1 x 360°, stainless **	With synthetic foot guard
Technical description page	80	83	83	84
Product code suffix	-IS	RI-03.01-KX	RI-03.03-KX	-FP
Available for	wheel Ø 160-200 mm with plate 140x110	wheel Ø 100-125 mm	wheel Ø 150-200 mm with plate 140x110	wheel Ø 125 mm upon request

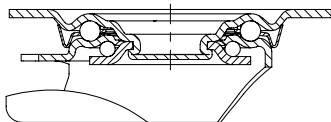
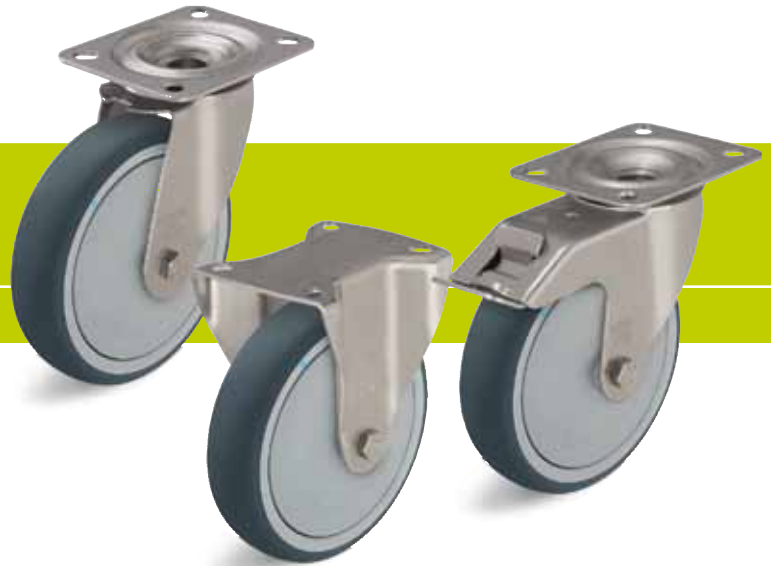
* Without alteration of the total height
** Only for swivel castors without brake

Series: LEX-PATH, BX-PATH

Stainless steel castors with top plate fitting, wheel with thermoplastic polyurethane tread

150 - 300 kg

RoHS



Brackets: LEX/BX series - Made of pressed high-quality, chromium-nickel stainless steel (Material No. 1.4301/ AISI 304), swivel bracket with double ball bearing in the swivel head, swivel head seals. The special Blickle dynamic riveting process of the swivel head results in minimal swivel head play and smooth rolling characteristics with an increased service life achieved by the work hardening of the ball race grooves.

All parts incl. axle material are corrosion-resistant.

Bolted wheel axle.

Vibration-ground finished.

Bracket overview: Page 70

Top plate drawings: Page 77

Wheel and swivel head 'stop-fix' brake: Page 80

Wheels: PATH series - Tread: Made of high-quality thermoplastic polyurethane, 94° shore A, dark grey, non-marking, non-staining.

Wheel centre: Made of high-quality, impact-resistant nylon, silver grey.

Bearing types: Plain bore, stainless steel roller bearing or a centrally encapsulated, sealed ball bearing (C). Ball bearing (C) with additional ball bearing seals as standard. Wheel Ø 80-125 mm with synthetic thread guard.

Detailed description: Page 208 and 42

Swivel castors	Fixed castors	Swivel castors with 'stop-fix' brake	Wheel Ø [mm]	Wheel width [mm]	Load capacity [kg]	Bearing type	Total height [mm]	Plate size [mm]	Bolt hole spacing [mm]	Bolt hole Ø [mm]	Offset swivel castor [mm]
LEX-PATH 80G	BX-PATH 80G	LEX-PATH 80G-FI	80	32	150	Plain bore	102	100 x 85	80 x 60	9	38
LEX-PATH 80KD-FK	BX-PATH 80KD-FK	LEX-PATH 80KD-FI-FK	80	32	150	Ball bearing (C)	102	100 x 85	80 x 60	9	38
LEX-PATH 100G	BX-PATH 100G	LEX-PATH 100G-FI	100	32	150	Plain bore	125	100 x 85	80 x 60	9	36
LEX-PATH 100KD-FK	BX-PATH 100KD-FK	LEX-PATH 100KD-FI-FK	100	32	150	Ball bearing (C)	125	100 x 85	80 x 60	9	36
LEX-PATH 125G	BX-PATH 125G	LEX-PATH 125G-FI	125	32	150	Plain bore	150	100 x 85	80 x 60	9	40
LEX-PATH 125KD-FK	BX-PATH 125KD-FK	LEX-PATH 125KD-FI-FK	125	32	150	Ball bearing (C)	150	100 x 85	80 x 60	9	40
LEX-PATH 160G	BX-PATH 160G	LEX-PATH 160G-FI	160	40	300	Plain bore	195	140 x 110	105 x 75-80	11	54
LEX-PATH 160XR	BX-PATH 160XR	LEX-PATH 160XR-FI	160	40	300	Roller bearing	195	140 x 110	105 x 75-80	11	54
LEX-PATH 160KD	BX-PATH 160KD	LEX-PATH 160KD-FI	160	40	300	Ball bearing (C)	195	140 x 110	105 x 75-80	11	54
LEX-PATH 200G	BX-PATH 200G	LEX-PATH 200G-FI	200	40	300	Plain bore	235	140 x 110	105 x 75-80	11	54
LEX-PATH 200XR	BX-PATH 200XR	LEX-PATH 200XR-FI	200	40	300	Roller bearing	235	140 x 110	105 x 75-80	11	54
LEX-PATH 200KD	BX-PATH 200KD	LEX-PATH 200KD-FI	200	40	300	Ball bearing (C)	235	140 x 110	105 x 75-80	11	54

18



Options

	Image plain bore version	Electrically conductive version, non-marking grey *	With 'ideal-stop' brake **	Directional lock (retro-fit) 1 x 360°, stainless ***	Directional lock (retro fit) 1 x 360°, stainless ***	With synthetic foot guard
Technical description page		36, 39	80	83	83	84
Product code suffix		-ELS	-IS	RI-03.01-KX	RI-03.03-KX	-FP
Available for		all ball bearing versions	wheel Ø 160-200 mm	wheel Ø 100-125 mm	wheel Ø 160-200 mm	wheel Ø 125 mm upon request

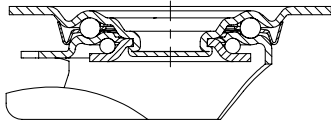
* Load capacity is reduced by 35 %
 ** Without alteration of the total height
 *** Only for swivel castors without brake

Series: LEX-PO, BX-PO

Stainless steel castors with top plate fitting, with nylon wheel

150 - 300 kg

RoHS



Brackets: LEX/BX series - Made of pressed high-quality, chromium-nickel stainless steel (Material No. 1.4301/ AISI 304), swivel bracket with double ball bearing in the swivel head, swivel head seals. The special Blickle dynamic riveting process of the swivel head results in minimal swivel head play and smooth rolling characteristics with an increased service life achieved by the work hardening of the ball race grooves.

All parts incl. axle material are corrosion-resistant.

Bolted wheel axle.

Vibration-ground finished.

Bracket overview: Page 70

Top plate drawings: Page 77

Wheel and swivel head 'stop-fix' brake: Page 80

Wheels: PO series - Made of high-quality, impact-resistant nylon, 70° shore D, natural white.

Bearing types: Plain bore, stainless steel roller bearing or a centrally encapsulated, sealed ball bearing (C). Ball bearing (C) with additional ball bearing seals as standard.

Detailed description: Page 276, 277 and 49

Swivel castors	Fixed castors	Swivel castors with 'stop-fix' brake	Wheel Ø [mm]	Wheel width [mm]	Load capacity [kg]	Bearing type	Total height [mm]	Plate size [mm]	Bolt hole spacing [mm]	Bolt hole Ø [mm]	Offset swivel castor [mm]
LEX-PO 75G	BX-PO 75G	LEX-PO 75G-FI	75	32	150	Plain bore	100	100 x 85	80 x 60	9	38
LEX-PO 75XR	BX-PO 75XR	LEX-PO 75XR-FI	75	32	150	Roller bearing	100	100 x 85	80 x 60	9	38
LEX-PO 80G	BX-PO 80G	LEX-PO 80G-FI	80	32	150	Plain bore	102	100 x 85	80 x 60	9	38
LEX-PO 80XR	BX-PO 80XR	LEX-PO 80XR-FI	80	32	150	Roller bearing	102	100 x 85	80 x 60	9	38
LEX-PO 80KD	BX-PO 80KD	LEX-PO 80KD-FI	80	32	150	Ball bearing (C)	102	100 x 85	80 x 60	9	38
LEX-PO 100G	BX-PO 100G	LEX-PO 100G-FI	100	37	150	Plain bore	125	100 x 85	80 x 60	9	36
LEX-PO 100XR	BX-PO 100XR	LEX-PO 100XR-FI	100	37	150	Roller bearing	125	100 x 85	80 x 60	9	36
LEX-PO 100KD	BX-PO 100KD	LEX-PO 100KD-FI	100	37	150	Ball bearing (C)	125	100 x 85	80 x 60	9	36
LEX-PO 125G	BX-PO 125G	LEX-PO 125G-FI	125	40	150	Plain bore	150	100 x 85	80 x 60	9	40
LEX-PO 125XR	BX-PO 125XR	LEX-PO 125XR-FI	125	40	150	Roller bearing	150	100 x 85	80 x 60	9	40
LEX-PO 125KD	BX-PO 125KD	LEX-PO 125KD-FI	125	40	150	Ball bearing (C)	150	100 x 85	80 x 60	9	40
LEX-PO 150G	BX-PO 150G	LEX-PO 150G-FI	150	50	300	Plain bore	190	140 x 110	105 x 75-80	11	54
LEX-PO 150XR	BX-PO 150XR	LEX-PO 150XR-FI	150	50	300	Roller bearing	190	140 x 110	105 x 75-80	11	54
LEX-PO 160G	BX-PO 160G	LEX-PO 160G-FI	160	50	300	Plain bore	195	140 x 110	105 x 75-80	11	54
LEX-PO 160XR	BX-PO 160XR	LEX-PO 160XR-FI	160	50	300	Roller bearing	195	140 x 110	105 x 75-80	11	54
LEX-PO 200G	BX-PO 200G	LEX-PO 200G-FI	200	50	300	Plain bore	235	140 x 110	105 x 75-80	11	54
LEX-PO 200XR	BX-PO 200XR	LEX-PO 200XR-FI	200	50	300	Roller bearing	235	140 x 110	105 x 75-80	11	54

Options



	Electrically conductive version, non-marking grey	With 'ideal-stop' brake *	Directional lock (retro-fit) 1 x 360°, stainless **	Directional lock (retro fit) 1 x 360°, stainless **	With synthetic foot guard
Technical description page	36, 40	80	83	83	84
Product code suffix	-ELS	-IS	RI-03.01-KX	RI-03.03-KX	-FP
Available for	upon request	wheel Ø 160-200 mm	wheel Ø 75, 100, 125 mm	wheel Ø 150-200 mm	wheel Ø 125 mm upon request

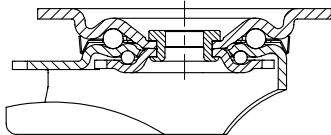
* Without alteration of the total height
 ** Only for swivel castors without brake

Series: LKX-SPO, BKX-SPO

Stainless steel heavy duty castors with top plate fitting, with heavy duty nylon wheel

350 - 800 kg

RoHS



Brackets: LKX/BKX series - Made of heavy pressed high-quality, chromium-nickel stainless steel (Material No. 1.4301/AISI 304), swivel bracket with double ball bearing in the swivel head, strong central kingpin (wheel Ø 125x50 - 200 mm), swivel head seals. The special Blickle dynamic riveting process of the swivel head results in minimal swivel head play and smooth rolling characteristics with an increased service life achieved by the work hardening of the ball race grooves.

All parts incl. axle material are corrosion-resistant. Bolted wheel axle. Vibration-ground finished.

Bracket overview: Page 71
Top plate drawings: Page 77

Wheel and swivel head 'stop-fix' brake: Page 80

Wheels: SPO series - Made of high-quality, impact-resistant nylon, very rugged, heavy wheel design, 70° shore D, natural white.

Bearing types: Plain bore or two pressed-in, stainless steel ball bearings.

Detailed description: Page 300, 301 and 49

Swivel castors	Fixed castors	Swivel castors with 'stop-fix' brake	Wheel Ø [mm]	Wheel width [mm]	Load capacity [kg]	Bearing type	Total height [mm]	Plate size [mm]	Bolt hole spacing [mm]	Bolt hole Ø [mm]	Offset swivel castor [mm]
LKX-SPO 80G	BKX-SPO 80G	LKX-SPO 80G-FI	80	37	350	Plain bore	110	100 x 85	80 x 60	9	40
LKX-SPO 80XK	BKX-SPO 80XK	LKX-SPO 80XK-FI	80	37	350	Ball bearing	110	100 x 85	80 x 60	9	40
LKX-SPO 100G-1	BKX-SPO 100G-1	LKX-SPO 100G-1-FI	100	37	350	Plain bore	130	100 x 85	80 x 60	9	45
LKX-SPO 100XK-1	BKX-SPO 100XK-1	LKX-SPO 100XK-1-FI	100	37	350	Ball bearing	130	100 x 85	80 x 60	9	45
LKX-SPO 125G-1	BKX-SPO 125G-1	LKX-SPO 125G-1-FI	125	40	350	Plain bore	155	100 x 85	80 x 60	9	48
LKX-SPO 125XK-1	BKX-SPO 125XK-1	LKX-SPO 125XK-1-FI	125	40	350	Ball bearing	155	100 x 85	80 x 60	9	48
LKX-SPO 125G-3	BKX-SPO 125G-3	LKX-SPO 125G-3-FI	125	40	350	Plain bore	155	140 x 110	105 x 75-80	11	48
LKX-SPO 125XK-3	BKX-SPO 125XK-3	LKX-SPO 125XK-3-FI	125	40	350	Ball bearing	155	140 x 110	105 x 75-80	11	48
LKX-SPO 127G	BKX-SPO 127G	LKX-SPO 127G-FI	125	50	750	Plain bore	170	140 x 110	105 x 75-80	11	55
LKX-SPO 127XK	BKX-SPO 127XK	LKX-SPO 127XK-FI	125	50	750	Ball bearing	170	140 x 110	105 x 75-80	11	55
LKX-SPO 150G	BKX-SPO 150G	LKX-SPO 150G-FI	150	50	800	Plain bore	197	140 x 110	105 x 75-80	11	63
LKX-SPO 150XK	BKX-SPO 150XK	LKX-SPO 150XK-FI	150	50	800	Ball bearing	197	140 x 110	105 x 75-80	11	63
LKX-SPO 200G	BKX-SPO 200G	LKX-SPO 200G-FI	200	50	800	Plain bore	245	140 x 110	105 x 75-80	11	65
LKX-SPO 200XK	BKX-SPO 200XK	LKX-SPO 200XK-FI	200	50	800	Ball bearing	245	140 x 110	105 x 75-80	11	65

Options



With 'stop-top' brake

Technical description page

80

Product code suffix

-ST

Available for

wheel Ø 125x50 - 200 mm