

Series: POTH

## Wheels with polyurethane tread, with heavy nylon wheel centre

200 - 1000 kg

RoHS



<b>Tread &amp; tyre hardness</b>	94° shore A
<b>Temperature resistance</b>	-25° C - +70° C temporarily up to +90° C
<b>Rolling resistance</b>	very good
<b>Operating noise</b>	good
<b>Floor surface preservation</b>	good

### POTH-wheel series:

**Tread:** Made of high-quality thermoplastic polyurethane, 94° shore A hardness, high operational comfort, low-noise operation, low rolling and swivel resistance, good floor preservation, high abrasion resistance, colour dark grey, non-marking, non-staining, chemically bonded for an inseparable connection with the wheel centre. (Material description page 39)

**Wheel centre:** Made of high-quality, impact-resistant nylon, colour natural white.

### Bearing types:

- Plain bore, corrosion-resistant
- Roller bearing, lubricated with long-life grease
- Ball bearing: Two pressed-in ball bearings, lubricated with long-life grease.
- Ball bearing (C): A centrally encapsulated sealed ball bearing within the injected nylon, lubricated with long-life grease.

### Other features:

Very high chemical resistance to many aggressive substances (table page 36-37).

Operating temperature: -25° C to +70° C, temporarily up to +90° C.

At ambient temperatures above +35° C the load capacity is reduced.

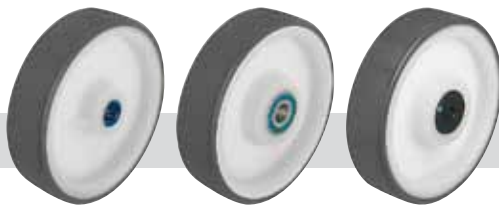
Maintenance-free under standard conditions.

**Wheel series overview page 47**

Wheels	Wheel Ø (D) [mm]	Wheel width (T2) [mm]	Load capacity [kg]	Bearing type	Axle bore Ø (d) [mm]	Hub length (T1) [mm]
POTH 75/15G	75	37	200	Plain bore	15	45
POTH 75/15R	75	37	200	Roller bearing	15	45
POTH 100/12G	100	35	300	Plain bore	12	45
POTH 100/15G	100	35	300	Plain bore	15	45
POTH 100/12R	100	35	300	Roller bearing	12	45
POTH 100/15R	100	35	300	Roller bearing	15	45
POTH 100/8K	100	35	300	Ball bearing (C)	8	46
POTH 100/10K	100	35	300	Ball bearing (C)	10	46
POTH 100/15K	100	35	300	Ball bearing	15	45
POTH 125/12G	125	40	350	Plain bore	12	45
POTH 125/15G	125	40	350	Plain bore	15	45
POTH 125/12R	125	40	350	Roller bearing	12	45
POTH 125/15R	125	40	350	Roller bearing	15	45
POTH 125/8K	125	40	350	Ball bearing (C)	8	46
POTH 125/10K	125	40	350	Ball bearing (C)	10	46
POTH 125/15K	125	40	350	Ball bearing	15	45
POTH 150/20G	150	45	500	Plain bore	20	60
POTH 150/20R	150	45	500	Roller bearing	20	60
POTH 150/20K	150	45	500	Ball bearing	20	60
POTH 160/20G	160	45	550	Plain bore	20	60
POTH 160/20R	160	45	550	Roller bearing	20	60
POTH 160/20K	160	45	550	Ball bearing	20	60
POTH 200/20G	200	50	800	Plain bore	20	60
POTH 200/20R	200	50	800	Roller bearing	20	60
POTH 200/20K	200	50	800	Ball bearing	20	60
POTH 200/25K	200	50	800	Ball bearing	25	60
POTH 250/25G	250	50	1000	Plain bore	25	60
POTH 250/25K	250	50	1000	Ball bearing	25	60

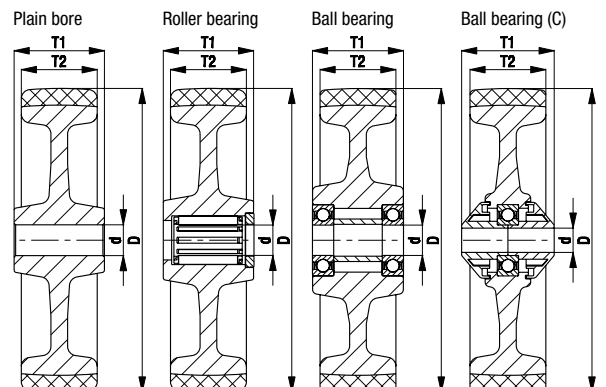
8

### Options



	With stainless steel roller bearing in the wheel hub	With stainless steel ball bearing in the wheel hub	Wheel with additional ball bearing seals *
Technical description page	60	61	61
<b>Product code suffix</b>	<b>-XR</b>	<b>-XK</b>	<b>-KD</b>
Available for	all sizes	upon request	ball brg. (C) version, others upon request

\* With wheel Ø 160-200 mm, the axle bore Ø is reduced to 12 mm and the hub length is increased to 62 mm

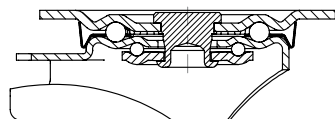


Series: L-POTH, B-POTH, BH-POTH

**Pressed steel castors, medium duty brackets, with top plate fitting, wheel with thermoplastic polyurethane tread**

200 - 500 kg

RoHS



**Brackets:** L/BH series - Made of pressed steel, swivel bracket with double ball bearing in the swivel head, strong central kingpin (wheel Ø 150-250 mm), swivel head seals. The special Blickle dynamic riveting process of the swivel head results in minimal swivel head play and smooth rolling characteristics with an increased service life achieved by the work hardening of the ball race grooves. Bolted wheel axle.  
Zinc-plated, blue-passivated, Cr6-free.  
Bracket overview: Page 65  
Top plate drawings: Page 77  
Wheel and swivel head 'stop-fix' brake: Page 80

**Wheels:** POTH series - Tread: Made of high-quality thermoplastic polyurethane, 94° shore A, dark grey, non-marking, non-staining.  
Wheel centre: Made of high-quality, impact-resistant nylon, natural white.  
Bearing types: Plain bore, roller bearing, two pressed-in ball bearings or a centrally encapsulated ball bearing (C).  
Detailed description: Page 213 and 47



8

Swivel castors	Fixed castors	Swivel castors with 'stop-fix' brake	Wheel Ø [mm]	Wheel width [mm]	Load capacity [kg]	Bearing type	Total height [mm]	Plate size [mm]	Bolt hole spacing [mm]	Bolt hole Ø [mm]	Offset swivel castor [mm]
L-POTH 100G	B-POTH 100G	L-POTH 100G-FI	100	35	200	Plain bore	125	100 x 85	80 x 60	9	36
L-POTH 100R	B-POTH 100R	L-POTH 100R-FI	100	35	200	Roller bearing	125	100 x 85	80 x 60	9	36
L-POTH 100K	B-POTH 100K	L-POTH 100K-FI	100	35	200	Ball bearing (C)	125	100 x 85	80 x 60	9	36
L-POTH 125G	B-POTH 125G	L-POTH 125G-FI	125	40	200	Plain bore	150	100 x 85	80 x 60	9	40
L-POTH 125R	B-POTH 125R	L-POTH 125R-FI	125	40	200	Roller bearing	150	100 x 85	80 x 60	9	40
L-POTH 125K	B-POTH 125K	L-POTH 125K-FI	125	40	200	Ball bearing (C)	150	100 x 85	80 x 60	9	40
L-POTH 150G	B-POTH 150G	L-POTH 150G-FI	150	45	400	Plain bore	190	140 x 110	105 x 75-80	11	60
L-POTH 150R	B-POTH 150R	L-POTH 150R-FI	150	45	400	Roller bearing	190	140 x 110	105 x 75-80	11	60
L-POTH 150K	B-POTH 150K	L-POTH 150K-FI	150	45	400	Ball bearing	190	140 x 110	105 x 75-80	11	60
L-POTH 160G	B-POTH 160G	L-POTH 160G-FI	160	45	400	Plain bore	195	140 x 110	105 x 75-80	11	60
L-POTH 160R	B-POTH 160R	L-POTH 160R-FI	160	45	400	Roller bearing	195	140 x 110	105 x 75-80	11	60
L-POTH 160K	B-POTH 160K	L-POTH 160K-FI	160	45	400	Ball bearing	195	140 x 110	105 x 75-80	11	60
L-POTH 200G	B-POTH 200G	L-POTH 200G-FI	200	50	400	Plain bore	235	140 x 110	105 x 75-80	11	65
L-POTH 200R	B-POTH 200R	L-POTH 200R-FI	200	50	400	Roller bearing	235	140 x 110	105 x 75-80	11	65
L-POTH 200K	B-POTH 200K	L-POTH 200K-FI	200	50	400	Ball bearing	235	140 x 110	105 x 75-80	11	65
L-POTH 250G-3	BH-POTH 250G	*	250	50	500	Plain bore	295	140 x 110	105 x 75-80	11	77
L-POTH 250K-3	BH-POTH 250K	*	250	50	500	Ball bearing	295	140 x 110	105 x 75-80	11	77

\* For the 'stop-top' brake version refer to 'Options'  
For stainless steel versions refer to page 367

**Options \*\***



	With pressed steel thread guard, zinc-plated	With 'stop-top' brake	With central braking system 'central-stop'	Directional lock (retro fit) 1 x 360° ***	With synthetic (-FP) or steel (-FS) foot guard	With stainless steel axle tube in the wheel hub	With stainless steel roller bearing (-XR) / ball bearing (-XK)
Technical description page	84	80	81	83	84	85	60 / 61
Product code suffix	-FA	-ST	-CS11	RI-03.01 / RI-05.03	-FP / -FS	-XA	-XR / -XK
Available for	wheel Ø 100-200 mm	all sizes	wheel Ø 160-200 mm	RI-03.01: Ø 100-125 RI-05.03: Ø 150-200	upon request	plain bore versions upon request	upon request

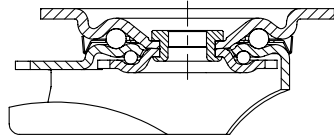
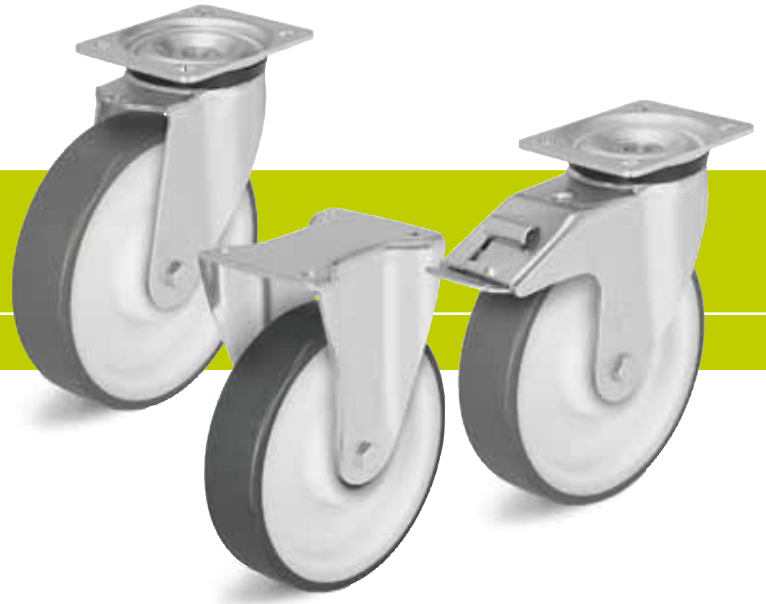
\*\* Additional options: Wheel with additional ball bearing seals (-KD), available upon request (technical description page 61)  
\*\*\* Only for swivel castors without brake

Series: LK-POTH, BK-POTH, BH-POTH

**Pressed steel castors, medium heavy duty brackets, with top plate fitting, wheel with thermoplastic polyurethane tread**

200 - 600 kg

RoHS



**Brackets:** LK/BK/BH series - Made of heavy pressed steel, swivel bracket with double ball bearing in the swivel head, strong central kingpin (wheel-Ø 150-200 mm), swivel head seals. The special Blickle dynamic riveting process of the swivel head results in minimal swivel head play and smooth rolling characteristics with an increased service life achieved by the work hardening of the ball race grooves. Bolted wheel axle. Zinc-plated, blue-passivated, Cr6-free. Bracket overview: Page 66 Top plate drawings: Page 77 Wheel and swivel head 'stop-fix' brake: Page 80

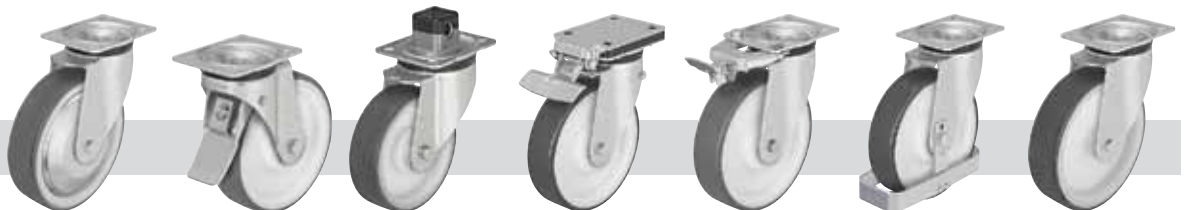
**Wheels:** POTH series - Tread: Made of high-quality thermoplastic polyurethane, 94° shore A, dark grey, non-marking, non-staining. Wheel centre: Made of high-quality, impact-resistant nylon, natural white. Bearing types: Plain bore, roller bearing, two pressed-in ball bearings or a centrally encapsulated ball bearing (C). Detailed description: Page 213 and 47



Swivel castors	Fixed castors	Swivel castors with 'stop-fix' brake	Wheel Ø [mm]	Wheel width [mm]	Load capacity [kg]	Bearing type	Total height [mm]	Plate size [mm]	Bolt hole spacing [mm]	Bolt hole Ø [mm]	Offset swivel castor [mm]
LK-POTH 75G	BK-POTH 75G	LK-POTH 75G-FI	75	37	200	Plain bore	108	100 x 85	80 x 60	9	40
LK-POTH 75R	BK-POTH 75R	LK-POTH 75R-FI	75	37	200	Roller bearing	108	100 x 85	80 x 60	9	40
LK-POTH 100G-1	BK-POTH 100G-1	LK-POTH 100G-1-FI	100	35	300	Plain bore	130	100 x 85	80 x 60	9	45
LK-POTH 100R-1	BK-POTH 100R-1	LK-POTH 100R-1-FI	100	35	300	Roller bearing	130	100 x 85	80 x 60	9	45
LK-POTH 100K-1	BK-POTH 100K-1	LK-POTH 100K-1-FI	100	35	300	Ball bearing (C)	130	100 x 85	80 x 60	9	45
LK-POTH 100G-3	BK-POTH 100G-3	LK-POTH 100G-3-FI	100	35	300	Plain bore	130	140 x 110	105 x 75-80	11	45
LK-POTH 100R-3	BK-POTH 100R-3	LK-POTH 100R-3-FI	100	35	300	Roller bearing	130	140 x 110	105 x 75-80	11	45
LK-POTH 100K-3	BK-POTH 100K-3	LK-POTH 100K-3-FI	100	35	300	Ball bearing (C)	130	140 x 110	105 x 75-80	11	45
LK-POTH 125G-1	BK-POTH 125G-1	LK-POTH 125G-1-FI	125	40	350	Plain bore	155	100 x 85	80 x 60	9	48
LK-POTH 125R-1	BK-POTH 125R-1	LK-POTH 125R-1-FI	125	40	350	Roller bearing	155	100 x 85	80 x 60	9	48
LK-POTH 125K-1	BK-POTH 125K-1	LK-POTH 125K-1-FI	125	40	350	Ball bearing (C)	155	100 x 85	80 x 60	9	48
LK-POTH 125G-3	BK-POTH 125G-3	LK-POTH 125G-3-FI	125	40	350	Plain bore	155	140 x 110	105 x 75-80	11	48
LK-POTH 125R-3	BK-POTH 125R-3	LK-POTH 125R-3-FI	125	40	350	Roller bearing	155	140 x 110	105 x 75-80	11	48
LK-POTH 125K-3	BK-POTH 125K-3	LK-POTH 125K-3-FI	125	40	350	Ball bearing (C)	155	140 x 110	105 x 75-80	11	48
LK-POTH 150G	BH-POTH 150G	LK-POTH 150G-FI	150	45	500	Plain bore	197	140 x 110	105 x 75-80	11	63
LK-POTH 150R	BH-POTH 150R	LK-POTH 150R-FI	150	45	500	Roller bearing	197	140 x 110	105 x 75-80	11	63
LK-POTH 150K	BH-POTH 150K	LK-POTH 150K-FI	150	45	500	Ball bearing	197	140 x 110	105 x 75-80	11	63
LK-POTH 160K	BH-POTH 160K	LK-POTH 160K-FI	160	45	550	Ball bearing	202	140 x 110	105 x 75-80	11	63
LK-POTH 200G	BH-POTH 200G	LK-POTH 200G-FI	200	50	600	Plain bore	245	140 x 110	105 x 75-80	11	65
LK-POTH 200R	BH-POTH 200R	LK-POTH 200R-FI	200	50	600	Roller bearing	245	140 x 110	105 x 75-80	11	65
LK-POTH 200K	BH-POTH 200K	LK-POTH 200K-FI	200	50	600	Ball bearing	245	140 x 110	105 x 75-80	11	65

For stainless steel versions refer to page 368

**Options \***



	With pressed steel thread guard, zinc-plated	With 'stop-top' brake	With central braking system 'central-stop'	With 'ideal-stop' brake ttl. height +17mm **	Directional lock (retro-fit) 1 x 360°	With steel foot guard	With stainless steel axle tube in the wheel hub
Technical description page	84	80	81	80	83	84	85
Product code suffix	-FA	-ST	-CS11	-IS	refer to ***	-FS	-XA
Available for	wheel Ø 100-200 mm	all sizes	wheel Ø 100-125 mm	Ø 100, 125, 160, 200 with plate 140x110	for wheel Ø and plate dimensions refer to***	upon request	plain bore versions upon request

\* **Additional options:** Stainless steel roller bearing (-XR) or stainless steel ball bearing (-XK) in the wheel hub or wheel with additional ball bearing seals (-KD), available upon request  
 \*\* Matching synthetic adapter plate for total height compensation for swivel and fixed castors without 'ideal-stop' brake: **Product code AP3**  
 \*\*\* **RI-05.01** for wheel Ø 75-125 mm with plate 100x85 mm, **RI-03.03** for wheel Ø 100-125 mm with plate 140x110 mm, **RI-05.03** for wheel Ø 150-200 mm (only for swivel castors without brake)

Series: ALTH

## Heavy duty wheels with Blickle Extrathane® polyurethane tread, with aluminium wheel centre

180 - 1000 kg

RoHS



<b>Tread &amp; tyre hardness</b>	92° shore A
<b>Temperature resistance</b>	-25° C - +70° C temporarily up to +90° C
<b>Rolling resistance</b>	very good
<b>Operating noise</b>	good
<b>Floor surface preservation</b>	good



### ALTH-wheel series:

**Tread:** Made of high-quality, reaction-injected polyurethane-elastomer Blickle Extrathane®, 92° shore A hardness, low-noise operation, low rolling resistance, good floor preservation, high abrasion resistance, high cut and tear propagation resistance, colour light brown, non-marking, non-staining, very good chemical connection with the wheel centre.

(Material description page 39)

**Wheel centre:** Made of die-cast aluminium.

#### Bearing type:

- Ball bearing: Two pressed-in ball bearings, lubricated with long-life grease.

#### Other features:

High chemical resistance to many aggressive substances (table page 36-37).

Operating temperature: -25° C to +70° C, temporarily up to +90° C.

At ambient temperatures above +40° C the load capacity is reduced.

Maintenance-free under standard conditions.

**Wheel series overview page 48**

Wheels	Wheel Ø (D) [mm]	Wheel width (T2) [mm]	Load capacity [kg]	Bearing type	Axle bore Ø (d) [mm]	Hub length (T1) [mm]
ALTH 80/15K	80	30	180	Ball bearing	15	35
ALTH 100/15K	100	40	250	Ball bearing	15	45
ALTH 101/15K *	100	40	350	Ball bearing	15	40
ALTH 125/15K	125	40	350	Ball bearing	15	45
ALTH 127/20K	125	54	450	Ball bearing	20	60
ALTH 140/20K	140	54	500	Ball bearing	20	60
ALTH 151/15K	150	40	400	Ball bearing	15	60
ALTH 150/20K	150	50	500	Ball bearing	20	60
ALTH 160/20K	160	50	550	Ball bearing	20	60
ALTH 180/20K	180	50	600	Ball bearing	20	60
ALTH 200/20K	200	50	800	Ball bearing	20	60
ALTH 200/25K	200	50	800	Ball bearing	25	60
ALTH 250/25K	250	60	1000	Ball bearing	25	70

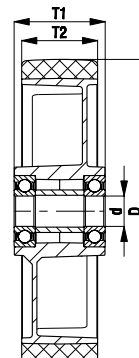
\* Heavy design

11

### Options



	Antistatic version, non-marking grey	With extra crowned running tread
Technical description page	36, 39	
Product code suffix	-AS	-CO
Available for	all sizes except wheel Ø 140 mm	upon request



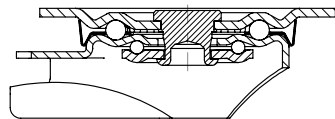


Series: L-ALTH, B-ALTH, BH-ALTH

**Pressed steel castors, medium duty brackets, with top plate fitting, wheel with Blickle Extrathane® polyurethane tread**

180 - 500 kg

RoHS



**Brackets:** L/B/BH series - Made of pressed steel, swivel bracket with double ball bearing in the swivel head, strong central kingpin (wheel Ø 150-250 mm), swivel head seals. The special Blickle dynamic riveting process of the swivel head results in minimal swivel head play and smooth rolling characteristics with an increased service life achieved by the work hardening of the ball race grooves. Bolted wheel axle. Zinc-plated, blue-passivated, Cr6-free. Bracket overview: Page 65 Top plate drawings: Page 77 Wheel and swivel head 'stop-fix' brake: Page 80

**Wheels:** ALTH series - Tread: Made of high-quality polyurethane-elastomer Blickle Extrathane®, 92° shore A, light brown, non-marking, non-staining. Wheel centre: Made of die-cast aluminium. Bearing type: Two pressed-in ball bearings. Detailed description: Page 246 and 48

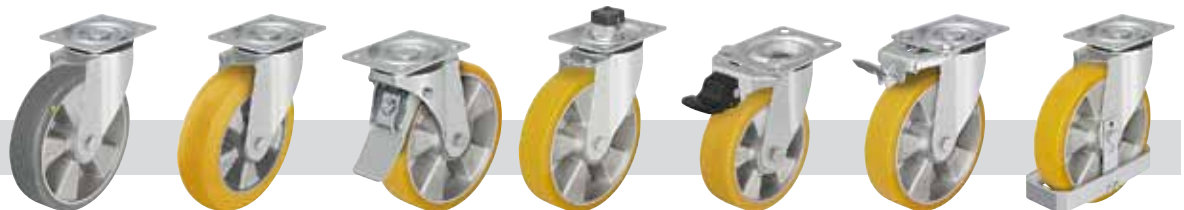


Swivel castors	Fixed castors	Swivel castors with 'stop-fix' brake	Wheel Ø [mm]	Wheel width [mm]	Load capacity [kg]	Bearing type	Total height [mm]	Plate size [mm]	Bolt hole spacing [mm]	Bolt hole Ø [mm]	Offset swivel castor [mm]
L-ALTH 80K	B-ALTH 80K	L-ALTH 80K-FI	80	30	180	Ball bearing	102	100 x 85	80 x 60	9	38
L-ALTH 100K	B-ALTH 100K	L-ALTH 100K-FI	100	40	200	Ball bearing	125	100 x 85	80 x 60	9	36
L-ALTH 125K	B-ALTH 125K	L-ALTH 125K-FI	125	40	200	Ball bearing	150	100 x 85	80 x 60	9	40
L-ALTH 151K	B-ALTH 151K	L-ALTH 151K-FI	150	40	400	Ball bearing	190	140 x 110	105 x 75-80	11	60
L-ALTH 150K	B-ALTH 150K	L-ALTH 150K-FI	150	50	400	Ball bearing	190	140 x 110	105 x 75-80	11	60
L-ALTH 160K	B-ALTH 160K	L-ALTH 160K-FI	160	50	400	Ball bearing	195	140 x 110	105 x 75-80	11	60
L-ALTH 180K	B-ALTH 180K	L-ALTH 180K-FI	180	50	400	Ball bearing	215	140 x 110	105 x 75-80	11	60
L-ALTH 200K	B-ALTH 200K	L-ALTH 200K-FI	200	50	400	Ball bearing	235	140 x 110	105 x 75-80	11	65
L-ALTH 250K-3	BH-ALTH 250K	*	250	60	500	Ball bearing	295	140 x 110	105 x 75-80	11	77

\* For the 'stop-top' brake version refer to 'Options'

11

**Options**



	Antistatic version, non-marking grey	With extra crowned running tread	With 'stop-top' brake	With central braking system 'central-stop'	Directional lock (retro fit) 1 x 360° **	Directional lock (retro fit) 1 x 360° **	With synthetic (-FP) or steel (-FS) foot guard
Technical description page	36, 39		80	81	83	83	84
Product code suffix	-AS	-CO	-ST	-CS11	RI-03.01	RI-05.03	-FP / -FS
Available for	all sizes	upon request	all sizes	wheel Ø 160+200 mm	wheel Ø 100-125 mm	wheel Ø 150-200 mm	upon request

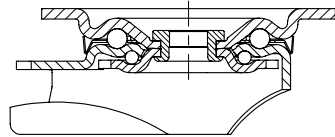
\*\* Only for swivel castors without brake

Series: LK-ALTH, BK-ALTH, BH-ALTH

## Pressed steel castors, medium heavy duty brackets, with top plate fitting, wheel with Blickle Extrathane® polyurethane tread

180 - 600 kg

✓RoHS



**Brackets:** LK/BK/BH series - Made of heavy pressed steel, swivel bracket with double ball bearing in the swivel head, strong central kingpin (wheel Ø 125x54 - 200 mm), swivel head seals. The special Blickle dynamic riveting process of the swivel head results in minimal swivel head play and smooth rolling characteristics with an increased service life achieved by the work hardening of the ball race grooves. Bolted wheel axle. Zinc-plated, blue-passivated, Cr6-free. Bracket overview: Page 66 Top plate drawings: Page 77 Wheel and swivel head 'stop-fix' brake: Page 80

**Wheels:** ALTH series - Tread: Made of high-quality polyurethane-elastomer Blickle Extrathane®, 92° shore A, light brown, non-marking, non-staining. Wheel centre: Made of die-cast aluminium. Bearing type: Two pressed-in ball bearings. Detailed description: Page 246 and 48



Swivel castors	Fixed castors	Swivel castors with 'stop-fix' brake	Wheel Ø [mm]	Wheel width [mm]	Load capacity [kg]	Bearing type	Total height [mm]	Plate size [mm]	Bolt hole spacing [mm]	Bolt hole Ø [mm]	Offset swivel castor [mm]
LK-ALTH 80K	BK-ALTH 80K	LK-ALTH 80K-FI	80	30	180	Ball bearing	110	100 x 85	80 x 60	9	40
LK-ALTH 100K-1	BK-ALTH 100K-1	LK-ALTH 100K-1-FI	100	40	250	Ball bearing	130	100 x 85	80 x 60	9	45
LK-ALTH 100K-3	BK-ALTH 100K-3	LK-ALTH 100K-3-FI	100	40	250	Ball bearing	130	140 x 110	105 x 75-80	11	45
LK-ALTH 125K-1	BK-ALTH 125K-1	LK-ALTH 125K-1-FI	125	40	350	Ball bearing	155	100 x 85	80 x 60	9	48
LK-ALTH 125K-3	BK-ALTH 125K-3	LK-ALTH 125K-3-FI	125	40	350	Ball bearing	155	140 x 110	105 x 75-80	11	48
LK-ALTH 127K	BH-ALTH 127K	LK-ALTH 127K-FI	125	54	450	Ball bearing	170	140 x 110	105 x 75-80	11	55
LK-ALTH 150K	BH-ALTH 150K	LK-ALTH 150K-FI	150	50	500	Ball bearing	197	140 x 110	105 x 75-80	11	63
LK-ALTH 160K	BH-ALTH 160K	LK-ALTH 160K-FI	160	50	550	Ball bearing	202	140 x 110	105 x 75-80	11	63
LK-ALTH 180K	BH-ALTH 180K	LK-ALTH 180K-FI	180	50	600	Ball bearing	223	140 x 110	105 x 75-80	11	65
LK-ALTH 200K	BH-ALTH 200K	LK-ALTH 200K-FI	200	50	600	Ball bearing	245	140 x 110	105 x 75-80	11	65

11



Options	Antistatic version, non-marking grey	With extra crowned running tread	With 'stop-top' brake	With central braking system 'central-stop'	With 'ideal-stop' brake ttl. height +17mm *	Directional lock (retro-fit) 1 x 360°	With steel foot guard
Technical description page	36, 39		80	81	80	83	84
Product code suffix	-AS	-CO	-ST	-CS11	-IS	refer to **	-FS
Available for	all sizes	upon request	all sizes	wheel Ø 100 - 125x40 mm	Ø 100, 125, 160, 200 with plate 140x110	for wheel Ø and plate dimensions refer to **	upon request

\* Matching synthetic adapter plate for total height compensation for swivel and fixed castors without 'ideal-stop' brake: **Product code AP3**  
 \*\* **RI-05.01** available for wheel Ø 80 - 125 mm with plate 100x85 mm, **RI-03.03** available for wheel Ø 100 - 125x40 mm with plate 140x110 mm, **RI-05.03** available for wheel Ø 125x54 - 200 mm (only for swivel castors without brake)

Series: VSTH, GTH, wheel Ø 35 - 200 mm

## Heavy duty wheels with Blickle Extrathane® polyurethane tread, with steel or cast iron wheel centre

100 - 1600 kg

RoHS



<b>Tread &amp; tyre hardness</b>	92° shore A
<b>Temperature resistance</b>	-25° C - +70° C temporarily up to +90° C
<b>Rolling resistance</b>	very good
<b>Operating noise</b>	good
<b>Floor surface preservation</b>	good



### VSTH, GTH-wheel series:

**Tread:** Made of high-quality, reaction-injected polyurethane-elastomer Blickle Extrathane®, 92° shore A hardness, low-noise operation, low rolling resistance, good floor preservation, high abrasion resistance, high cut and tear propagation resistance, colour light brown, non-marking, non-staining, very good chemical connection with the wheel centre.

(Material description page 39)

**Wheel centre:** VSTH series: Made of steel.

GTH series: Made of rugged grey cast iron, wheel Ø 150 mm or larger with grease nipple, lacquered, colour silver.

### Bearing type:

- Ball bearing: Two pressed-in ball bearings, lubricated with long-life grease.

### Other features:

High chemical resistance to many aggressive substances (table page 36-37).

Operating temperature: -25° C to +70° C, temporarily up to +90° C.

At ambient temperatures above +40° C the load capacity is reduced.

Maintenance-free under standard conditions.

**Wheel series overview page 48**

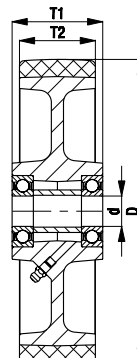
Wheels	Wheel Ø (D) [mm]	Wheel width (T2) [mm]	Load capacity [kg]	Bearing type	Axle bore Ø (d) [mm]	Hub length (T1) [mm]
VSTH 35/6K	35	27	100	Ball bearing	6	30
VSTH 50/8K	50	33	150	Ball bearing	8	36
VSTH 60/15K	60	35	200	Ball bearing	15	35
VSTH 62/10K	60	60	320	Ball bearing	10	60
VSTH 65/15K	65	40	250	Ball bearing	15	40
VSTH 75/20K	75	40	270	Ball bearing	20	40
VSTH 80/20K	80	40	280	Ball bearing	20	40
VSTH 82/20K	80	70	500	Ball bearing	20	70
GTH 100/15K	100	40	400	Ball bearing	15	40
GTH 101/20-50K	100	50	500	Ball bearing	20	50
GTH 101/20K	100	50	500	Ball bearing	20	60
GTH 125/15K	125	40	500	Ball bearing	15	45
GTH 127/20-50K	125	50	600	Ball bearing	20	50
GTH 127/20K	125	50	600	Ball bearing	20	60
GTH 127/25-50K	125	50	600	Ball bearing	25	50
GTH 140/20K	140	54	800	Ball bearing	20	60
GTH 150/20-50K	150	50	750	Ball bearing	20	50
GTH 150/20K	150	50	750	Ball bearing	20	60
GTH 160/20K	160	50	800	Ball bearing	20	60
GTH 160/25K	160	50	800	Ball bearing	25	60
GTH 175/20K	175	50	875	Ball bearing	20	60
GTH 175/25K	175	50	875	Ball bearing	25	60
GTH 177/25K	175	80	1300	Ball bearing	25	80
GTH 181/25K	180	40	800	Ball bearing	25	40
GTH 182/25K	180	65	1100	Ball bearing	25	75
GTH 200/20K	200	50	1000	Ball bearing	20	60
GTH 200/25K	200	50	1000	Ball bearing	25	60
GTH 202/25K	200	80	1600	Ball bearing	25	90
GTH 202/30K	200	80	1600	Ball bearing	30	90
GTH 202/35K	200	80	1600	Ball bearing	35	90

For further wheel Ø refer to the next page

### Options



Image	Antistatic version, non-marking grey	Drive wheels with hub keyway
Technical description page	36, 39	57
<b>Product code suffix</b>	<b>-AS</b>	<b>GTHN series</b>
Available for	upon request	refer to page 462



Series: GTH, wheel Ø 250 - 1000 mm

**Heavy duty wheels with Blickle Extrathane® polyurethane tread, with cast iron wheel centre**

📦 1250 - 30000 kg    ✓RoHS



<b>Tread &amp; tyre hardness</b>	92° shore A
<b>Temperature resistance</b>	-25° C - +70° C temporarily up to +90° C
<b>Rolling resistance</b>	very good
<b>Operating noise</b>	good
<b>Floor surface preservation</b>	good



**GTH-wheel series:**

**Tread:** Made of high-quality, reaction-injected polyurethane-elastomer Blickle Extrathane®, 92° shore A hardness, low-noise operation, low rolling resistance, good floor preservation, high abrasion resistance, high cut and tear propagation resistance, colour light brown, non-marking, non-staining, very good chemical connection with the wheel centre.  
(Material description page 39)

**Wheel centre:** Made of rugged grey cast iron, with grease nipple, lacquered, colour silver.

**Bearing types:**

- Ball bearing: Two pressed-in ball bearings, lubricated with long-life grease.
- Spherical roller bearing: Two pressed-in spherical roller bearings, sealed, extremely rugged, very durable, lubricated with long-life grease.

**Other features:**

High chemical resistance to many aggressive substances (table page 36-37).

Operating temperature: -25° C to +70° C, temporarily up to +90° C.

At ambient temperatures above +40° C the load capacity is reduced.

Maintenance-free under standard conditions.

**Wheel series overview page 48**

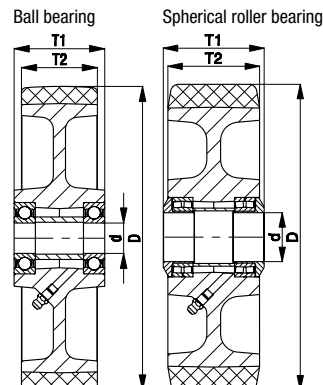
Wheels	Wheel Ø (D) [mm]	Wheel width (T2) [mm]	Load capacity [kg]	Bearing type	Axle bore Ø (d) [mm]	Hub length (T1) [mm]
GTH 251/25K	250	50	1250	Ball bearing	25	60
GTH 251/30K	250	50	1250	Ball bearing	30	60
GTH 250/25K	250	60	1500	Ball bearing	25	70
GTH 250/30K	250	60	1500	Ball bearing	30	70
GTH 252/25K	250	80	1800	Ball bearing	25	90
GTH 252/30K	250	80	1800	Ball bearing	30	90
GTH 254/40K	250	130	3000	Ball bearing	40	140
GTH 301/25K	300	45	1300	Ball bearing	25	60
GTH 300/30K	300	60	1800	Ball bearing	30	70
GTH 302/30K	300	80	2400	Ball bearing	30	90
GTH 302/35K	300	80	2400	Ball bearing	35	90
GTH 304/35K	300	100	3000	Ball bearing	35	120
GTH 360/35K	360	60	2400	Ball bearing	35	75
GTH 362/40K	360	75	2500	Ball bearing	40	90
GTH 363/40K	360	100	3600	Ball bearing	40	100
GTH 364/40K	360	120	3800	Ball bearing	40	120
GTH 400/35K	400	60	2400	Ball bearing	35	75
GTH 402/40K	400	80	3000	Ball bearing	40	90
GTH 404/40K	400	100	3800	Ball bearing	40	120
GTH 406/50K	400	125	5000	Ball bearing	50	125
GTH 500/50K	500	100	5000	Ball bearing	50	100
GTH 504/60K	500	150	7500	Ball bearing	60	150
GTH 506/80K	500	200	10000	Ball bearing	80	200
GTH 602/80K	600	150	9000	Ball bearing	80	150
GTH 604/80K	600	200	12000	Ball bearing	80	200
GTH 750/120K	750	200	15000	Ball bearing	120	200
GTH 1000/160PR	1000	300	30000	Spherical roller brg.	160	330

Further dimensions upon request

**Options**



	Antistatic version, non-marking grey	Drive wheels with hub keyway
Technical description page	36, 39	57
Product code suffix	-AS	GTHN series
Available for	upon request	refer to page 463



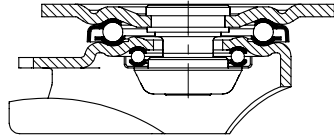


Series: LH-VSTH, BH-VSTH, LH-GTH, BH-GTH

**Pressed steel castors, heavy duty brackets, with top plate fitting, wheel with Blickle Extrathane® polyurethane tread**

280 - 900 kg

RoHS



**Brackets:** LH/BH series - Made of heavy pressed steel, swivel bracket with heavy fork and top plate, very strong bolted and secured central kingpin, double ball bearing in the swivel head, additionally reinforced by the integration of **four specially shaped and hardened bearing seats** resulting in a very high resistance to shock and impact loads.  
Bolted wheel axle.  
Zinc-plated, blue-passivated, Cr6-free.  
Bracket overview: Page 66  
Top plate drawings: Page 77  
Wheel and swivel head 'stop-fix' brake: Page 80

**Wheels:** VSTH/GTH series - Tread: Made of high-quality polyurethane-elastomer Blickle Extrathane®, 92° shore A, light brown, non-marking, non-staining.  
Wheel centre: VSTH series: Made of steel.  
GTH series: Made of rugged grey cast iron, wheel Ø 150 mm or larger with grease nipple, lacquered, silver.  
Bearing type: Two pressed-in ball bearings.  
Detailed description: Page 258, 259 and 48

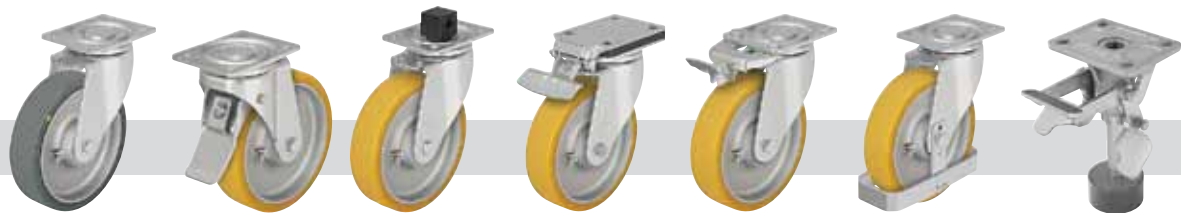


Swivel castors	Fixed castors	Swivel castors with 'stop-fix' brake	Wheel Ø [mm]	Wheel width [mm]	Load capacity [kg]	Bearing type	Total height [mm]	Plate size [mm]	Bolt hole spacing [mm]	Bolt hole Ø [mm]	Offset swivel castor [mm]
LH-VSTH 62K			60	60	320	Ball bearing	92	100 x 85	80 x 60	9	45
LH-VSTH 80K	BH-VSTH 80K	LH-VSTH 80K-FI	80	40	280	Ball bearing	120	100 x 85	80 x 60	9	45
LH-VSTH 82K			80	70	500	Ball bearing	112	100 x 85	80 x 60	9	45
LH-GTH 100K-1	BH-GTH 100K-1	LH-GTH 100K-1-FI	100	40	400	Ball bearing	140	100 x 85	80 x 60	9	45
LH-GTH 100K-3	BH-GTH 100K-3	LH-GTH 100K-3-FI	100	40	400	Ball bearing	140	140 x 110	105 x 75-80	11	45
LH-GTH 125K-1	BH-GTH 125K-1	LH-GTH 125K-1-FI	125	40	500	Ball bearing	165	100 x 85	80 x 60	9	45
LH-GTH 125K-3	BH-GTH 125K-3	LH-GTH 125K-3-FI	125	40	500	Ball bearing	165	140 x 110	105 x 75-80	11	45
LH-GTH 127K	BH-GTH 127K	LH-GTH 127K-FI	125	50	600	Ball bearing	170	140 x 110	105 x 75-80	11	55
LH-GTH 150K	BH-GTH 150K	LH-GTH 150K-FI	150	50	750	Ball bearing	197	140 x 110	105 x 75-80	11	65
LH-GTH 160K	BH-GTH 160K	LH-GTH 160K-FI	160	50	800	Ball bearing	202	140 x 110	105 x 75-80	11	65
LH-GTH 175K	BH-GTH 175K	LH-GTH 175K-FI	175	50	875	Ball bearing	220	140 x 110	105 x 75-80	11	67
LH-GTH 200K	BH-GTH 200K	LH-GTH 200K-FI	200	50	900	Ball bearing	245	140 x 110	105 x 75-80	11	70
LH-GTH 202K	BG-GTH 202K *	**	200	80	800	Ball bearing	245	140 x 110	105 x 75-80	11	70
LH-GTH 250K	BH-GTH 250K	**	250	60	900	Ball bearing	295	140 x 110	105 x 75-80	11	82

\* Welded steel construction, for technical description refer to page 262  
\*\* For the 'stop-top' brake version refer to 'Options'

11

**Options**



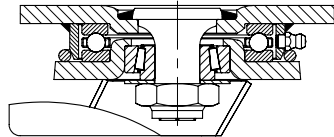
	Antistatic version, non-marking grey	With 'stop-top' brake	With central braking system 'central-stop'	With 'ideal-stop' brake ttl. height +17mm ***	Directional lock (retro-fit) 1 x 360°	With steel foot guard	Truck lock
Technical description page	36, 39	80	81	80	83	84	82, 483
Product code suffix	-AS	-ST	-CS13	-IS	refer to ****	-FS	FF 125/150/160/200
Available for	upon request	wheel Ø 80x40, 100 - 250 mm	wheel Ø 125x50, 160, 200x50, 250 mm	wheel Ø 125x50, 160, 200x50, 250 mm	for wheel Ø and plate dim. refer to ****	upon request	wheel Ø 125x50, 150, 160, 200 mm

\*\*\* Matching synthetic adapter plate for total height compensation for swivel and fixed castors without 'ideal-stop' brake: **Product code AP3**  
\*\*\*\* **RI-04.01** available for wheel Ø 80x40, 100, 125 mm with plate 100x85 mm, **RI-04.03** available for wheel Ø 100 - 125x40 mm with plate 140x110 mm, **RI-05.03** available for wheel Ø 125x50 - 200x50 mm (only for swivel castors without brake)

Series: LS-GTH, BS-GTH

**Welded steel heavy duty castors, strong swivel head design, wheel with Blickle Extrathane® polyurethane tread**

600 - 12000 kg RoHS



**Brackets:** LS/BS series - Particularly rugged welded steel construction, swivel bracket with axial grooved ball bearing DIN 711 and tapered roller bearing DIN 720 in the swivel head, dust and splash-proof, fitted grease nipple, bolted and secured with a welded very strong central kingpin. Bolted wheel axle.  
 Wheel Ø 125-400 mm: Zinc-plated, yellow-passivated, Cr6-free.  
 Wheel Ø 500-600 mm: Lacquered, red.  
 Bracket overview: Page 68  
 Top plate drawings: Page 77 and 78  
 Wheel and swivel head 'stop-top' brake: Page 80

**Wheels:** GTH series - Tread: Made of high-quality polyurethane-elastomer Blickle Extrathane®, 92° shore A, light brown, non-marking, non-staining.  
 Wheel centre: Made of rugged grey cast iron, wheel Ø 150 mm or larger with grease nipple, lacquered, silver.  
 Bearing type: Two pressed-in ball bearings.  
 Detailed description: Page 258, 259 and 48



Swivel castors	Fixed castors	Swivel castors with 'stop-top' brake	Wheel Ø [mm]	Wheel width [mm]	Load capacity [kg]	Bearing type	Total height [mm]	Plate size [mm]	Bolt hole spacing [mm]	Bolt hole Ø [mm]	Offset swivel castor [mm]
LS-GTH 127K	BS-GTH 127K	LS-GTH 127K-ST	125	50	600	Ball bearing	170	140 x 110	105 x 75-80	11	50
LS-GTH 150K	BS-GTH 150K	LS-GTH 150K-ST	150	50	750	Ball bearing	200	140 x 110	105 x 75-80	11	55
LS-GTH 160K	BS-GTH 160K	LS-GTH 160K-ST	160	50	800	Ball bearing	205	140 x 110	105 x 75-80	11	55
LS-GTH 200K	BS-GTH 200K	LS-GTH 200K-ST	200	50	1000	Ball bearing	245	140 x 110	105 x 75-80	11	60
LS-GTH 202K	BS-GTH 202K	LS-GTH 202K-ST	200	80	1600	Ball bearing	255	175 x 140	140 x 105	14	65
LS-GTH 250K	BS-GTH 250K	LS-GTH 250K-ST	250	60	1500	Ball bearing	305	175 x 140	140 x 105	14	75
LS-GTH 252K	BS-GTH 252K	LS-GTH 252K-ST	250	80	1800	Ball bearing	305	175 x 140	140 x 105	14	75
LS-GTH 300K	BS-GTH 300K	LS-GTH 300K-ST	300	60	1800	Ball bearing	355	175 x 140	140 x 105	14	85
LS-GTH 302K	BS-GTH 302K	LS-GTH 302K-ST	300	80	2400	Ball bearing	355	175 x 140	140 x 105	14	85
LS-GTH 304K	BS-GTH 304K	*	300	100	3000	Ball bearing	370	200 x 160	160 x 120	14	85
LS-GTH 362K	BS-GTH 362K	*	360	75	2500	Ball bearing	430	200 x 160	160 x 120	14	100
LS-GTH 364K	BS-GTH 364K	*	360	120	3800	Ball bearing	430	255 x 200	210 x 160	18	100
LS-GTH 402K	BS-GTH 402K	*	400	80	3000	Ball bearing	470	200 x 160	160 x 120	14	100
LS-GTH 406K	BS-GTH 406K	*	400	125	5000	Ball bearing	480	255 x 200	210 x 160	18	125
LS-GTH 504K	BS-GTH 504K	*	500	150	7500	Ball bearing	630	400 x 300	340 x 240	26	125
LS-GTH 604K	BS-GTH 604K	*	600	200	12000	Ball bearing	730	400 x 300	340 x 240	26	130

\* For the 'Radstop' brake version refer to 'Options'



**Options**

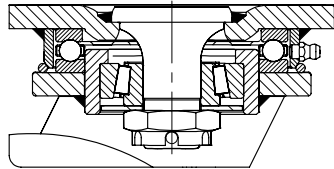
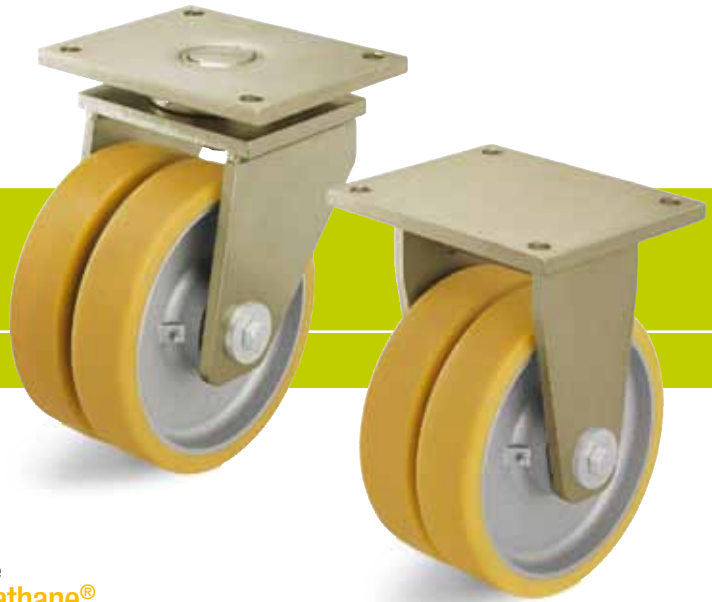
	Image with red lacquered bracket Ø 500-600 mm	Antistatic version, non-marking grey	With 'Radstop' wheel brake	With directional lock 2 x 180° (-RI2) / 4 x 90° (-RI4)	With directional lock 4 x 90° (hand-operated)	With steel foot guard	Truck lock
Technical description page		36, 39	81	83	83	84	82, 483
Product code suffix		-AS	-RAH	-RI2 / -RI4	-RI4H	-FS	FF 125/150/160/200
Available for		upon request	Ø 300x100 or larger upon request	wheel Ø 125 - 300x80 mm	Ø 300x100 or larger upon request	upon request	wheel Ø 125 - 200x50 mm

Series: LSD-VSTH, BSD-VSTH, LSD-GTH, BSD-GTH

**Welded steel heavy duty twin wheel castors, strong swivel head design, wheels with Blickle Extrathane® polyurethane tread**

520 - 10000 kg

RoHS



**Brackets:** LSD/BSL series - Particularly rugged welded steel construction, swivel bracket with axial grooved ball bearing DIN 711 and tapered roller bearing DIN 720 in the swivel head, dust and splash-proof, fitted grease nipple, bolted and secured with a welded very strong central kingpin.  
 Bolted wheel axle.  
 Wheel Ø 80-360 mm: Zinc-plated, yellow-passivated, Cr6-free.  
 Wheel Ø 400-500 mm: Lacquered, red.  
 Bracket overview: Page 68  
 Top plate drawings: Page 77 and 78

**Wheels:** VSTH/GTH series - Tread: Made of high-quality polyurethane-elastomer Blickle Extrathane®, 92° shore A, light brown, non-marking, non-staining.  
 Wheel centre: VSTH series: Made of steel.  
 GTH series: Made of rugged grey cast iron, wheel Ø 150 mm or larger with grease nipple, lacquered, silver.  
 Bearing type: Two pressed-in ball bearings.  
 Detailed description: Page 258, 259 and 48



Swivel castors	Fixed castors	Wheel Ø [mm]	Wheel width [mm]	Load capacity [kg]	Bearing type	Total height [mm]	Plate size [mm]	Bolt hole spacing [mm]	Bolt hole Ø [mm]	Offset swivel castor [mm]
LSD-VSTH 80K	BSD-VSTH 80K	80	2 x 40	520	Ball bearing	125	110 x 140 *	75-80 x 105	11	40
LSD-GTH 100K	BSD-GTH 100K	100	2 x 40	720	Ball bearing	145	110 x 140 *	75-80 x 105	11	45
LSD-GTH 127K	BSD-GTH 127K	125	2 x 50	1000	Ball bearing	185	140 x 175 *	105 x 140	14	50
LSD-GTH 150K-35	BSD-GTH 150K-35	150	2 x 50	1350	Ball bearing	215	140 x 175 *	105 x 140	14	55
LSD-GTH 200K-35	BSD-GTH 200K-35	200	2 x 50	1800	Ball bearing	260	140 x 175 *	105 x 140	14	60
LSD-GTH 202K	BSD-GTH 202K	200	2 x 80	2800	Ball bearing	280	200 x 255 *	160 x 210	18	60
LSD-GTH 250K	BSD-GTH 250K	250	2 x 60	2700	Ball bearing	330	200 x 255 *	160 x 210	18	70
LSD-GTH 252K	BSD-GTH 252K	250	2 x 80	3200	Ball bearing	330	200 x 255 *	160 x 210	18	70
LSD-GTH 302K	BSD-GTH 302K	300	2 x 80	4300	Ball bearing	390	200 x 255 *	160 x 210	18	80
LSD-GTH 304K	BSD-GTH 304K	300	2 x 100	5400	Ball bearing	390	200 x 255 *	160 x 210	18	80
	BSD-GTH 304K	300	2 x 100	5400	Ball bearing	390	200 x 300 *	160 x 210	18	
LSD-GTH 362K	BSD-GTH 362K	360	2 x 75	4500	Ball bearing	450	200 x 255 *	160 x 210	18	90
LSD-GTH 404K-42	BSD-GTH 404K-42	400	2 x 100	6800	Ball bearing	530	300 x 400 *	240 x 340	26	125
LSD-GTH 504K	BSD-GTH 504K	500	2 x 150	10000	Ball bearing	630	300 x 400 *	240 x 340	26	125

\* Fixed castors: Long plate side is parallel to the axle

11

**Options**



	Image with red lacquered bracket Ø 400-500 mm	Antistatic version, non-marking grey	With 'Radstop' wheel brake up to wheel Ø 200x50 mm	With 'Radstop' wheel brake, wheel Ø 200x80 mm or larger	With directional lock 2 x 180° (-RI2) / 4 x 90° (-RI4)	With directional lock 4 x 90° (hand-operated)	With steel foot guard
Technical description page		36, 39	81	81	83	83	84
Product code suffix		-AS	-RA	-RAH	-RI2 / -RI4	-RI4H	-FS
Available for		upon request	upon request	upon request	wheel Ø 80-200x50 upon request	wheel Ø 200x80 or larger upon request	upon request